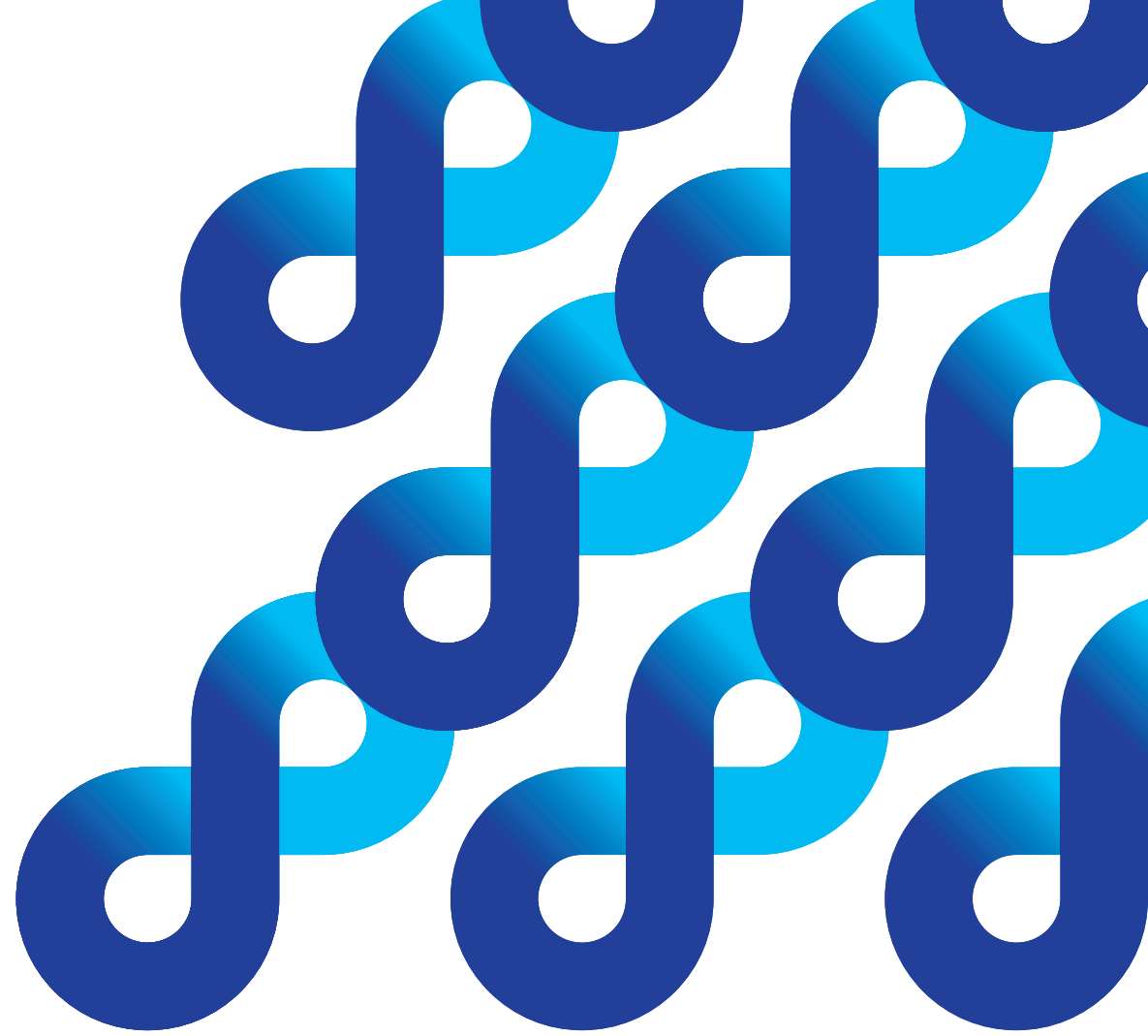


Company Profile



JFE Shoji Corporation

About Us

Company Summary

Name	JFE Shoji Corporation
Established	January, 1954
President and CEO	Yoshifumi Ubagai
Capital	14.5 billion
Major Businesses	Trading of each type of product domestically as well their import and export are the main concerns of the company. Our wideranging business interests include steel products, raw materials for steel, machinery and materials, real estate, in our group companies foods, electronics, and more
Settlement Term	March, 31st
Employees	Consolidated 8,753 (As of March 31st, 2025)
Offices (Domestic)	20 locations
Offices (Overseas)	34 locations

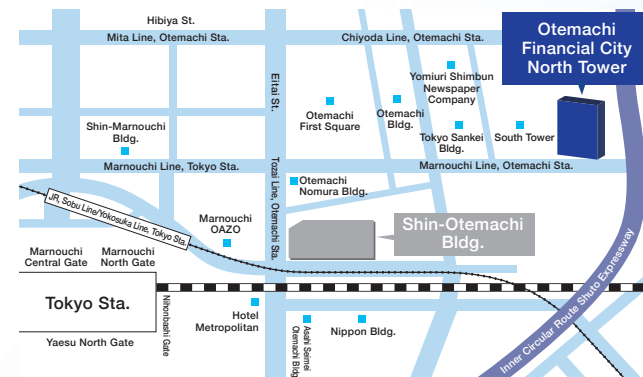
The Location of Head Office

Otemachi Financial City North Tower, 1-9-5, Otemachi, Chiyoda-ku, Tokyo, 100 - 0004

TEL : 81-3-5203-5053 FAX : 81-3-5203-5289

Access (time from nearest station)

- JR Line, Tokyo Station, Marunouchi North Gate 10 minutes by walk
- Tokyo Metro, Otemachi station 2 minutes by walk (Marunouchi Line) 6 minutes by walk (Tozai Line)
- Toei Mita Line, Otemachi station 8 minutes by walk



Corporate Philosophy

Corporate Philosophy

We will strive for sound, highly transparent corporate management through thorough corporate governance.

We will ensure a broadminded, open corporate culture, with individual employees' creativity as its foundation.

We will maximize the corporate value of the Group as we seek to become a corporate Group that holds clear value for society and the market.

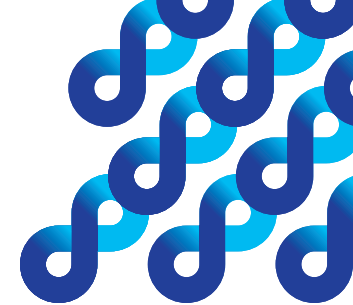
Vision

Improving our abilities to offer proposals and convey information as the JFE Group's core trading company, we will seek to grow sustainably with our customers to be a company with a strong market presence.

Purpose

Steel and More: Bridging Global Progress

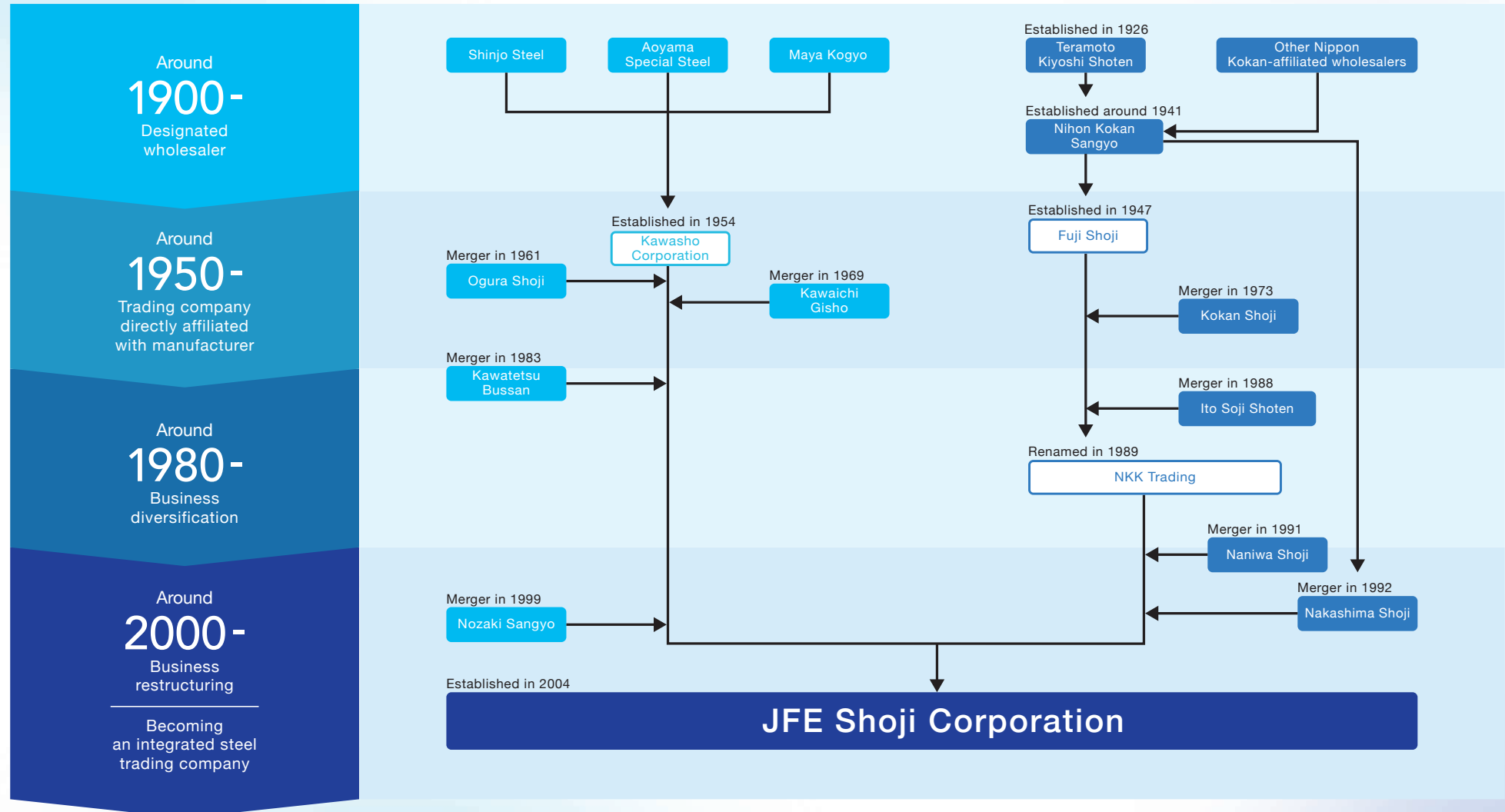
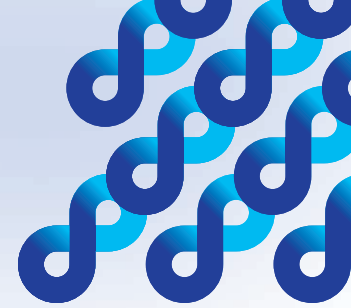
The JFE Shoji Group respects connections between people, sincerely and earnestly engaging with customers. By bridging people, goods, and functions, we have provided "solutions that meet customer needs" and "value." We use the word "Bridge," which is the essence of a trading company, to express our spirit to bridge goods, customer relationships, the values customers seek, and to expand that network worldwide.



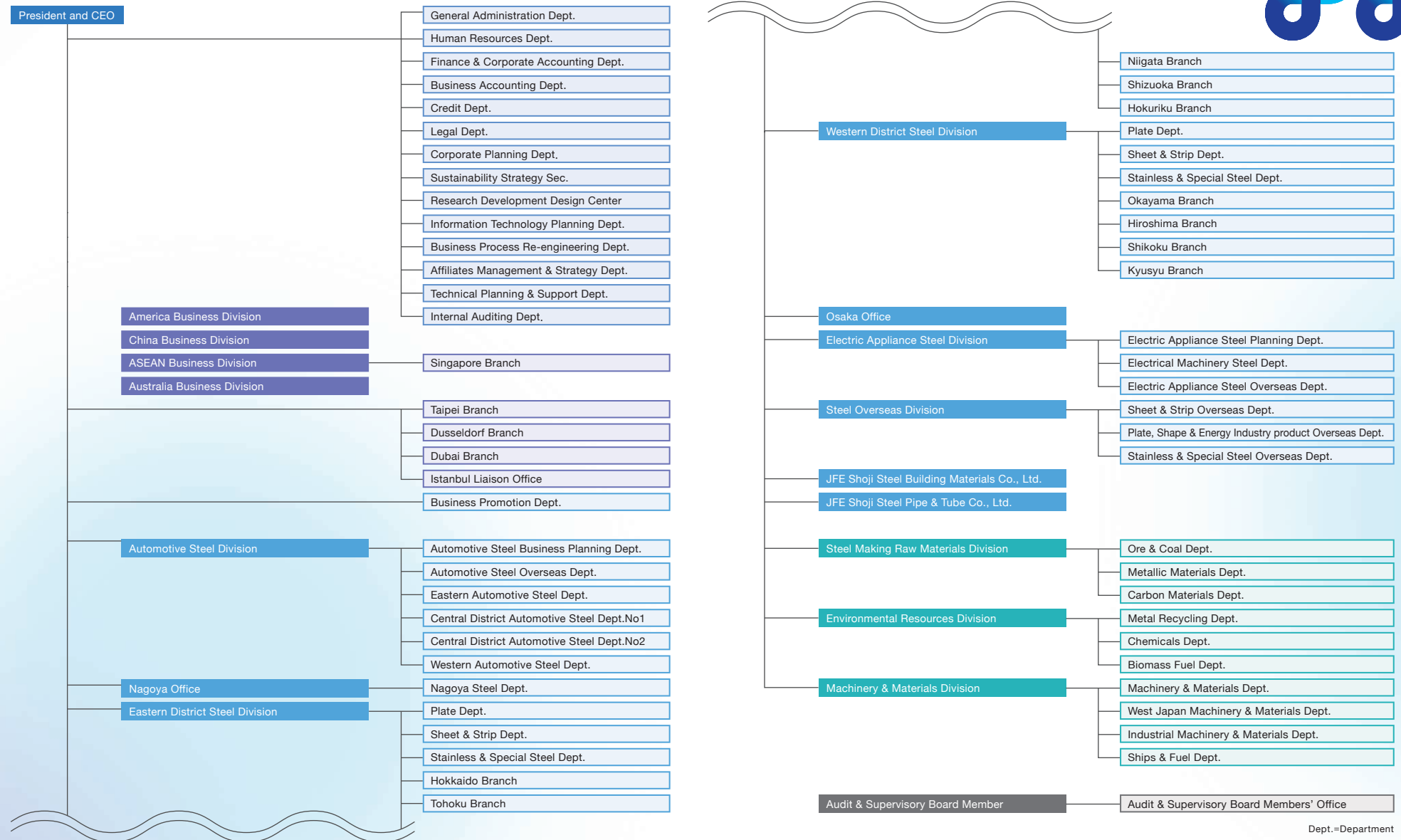
Establishment of JFE Shoji

JFE Shoji Group was established in October 2004 when Kawasho Corporation and NKK Trading Inc. merged and restructured themselves. Its mission was and is to handle the core functions of product sales and global procurement for the JFE Group.

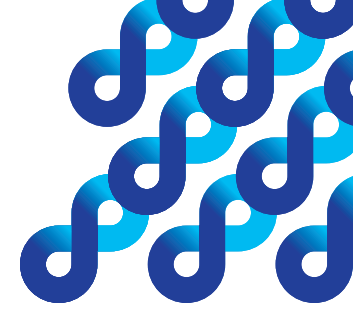
For more information



Organization Chart



Dept.=Department



JFE Group Structure

Group Organizational Chart

JFE Holdings



For more information

100%



JFE Steel



For more information



JFE Engineering



For more information

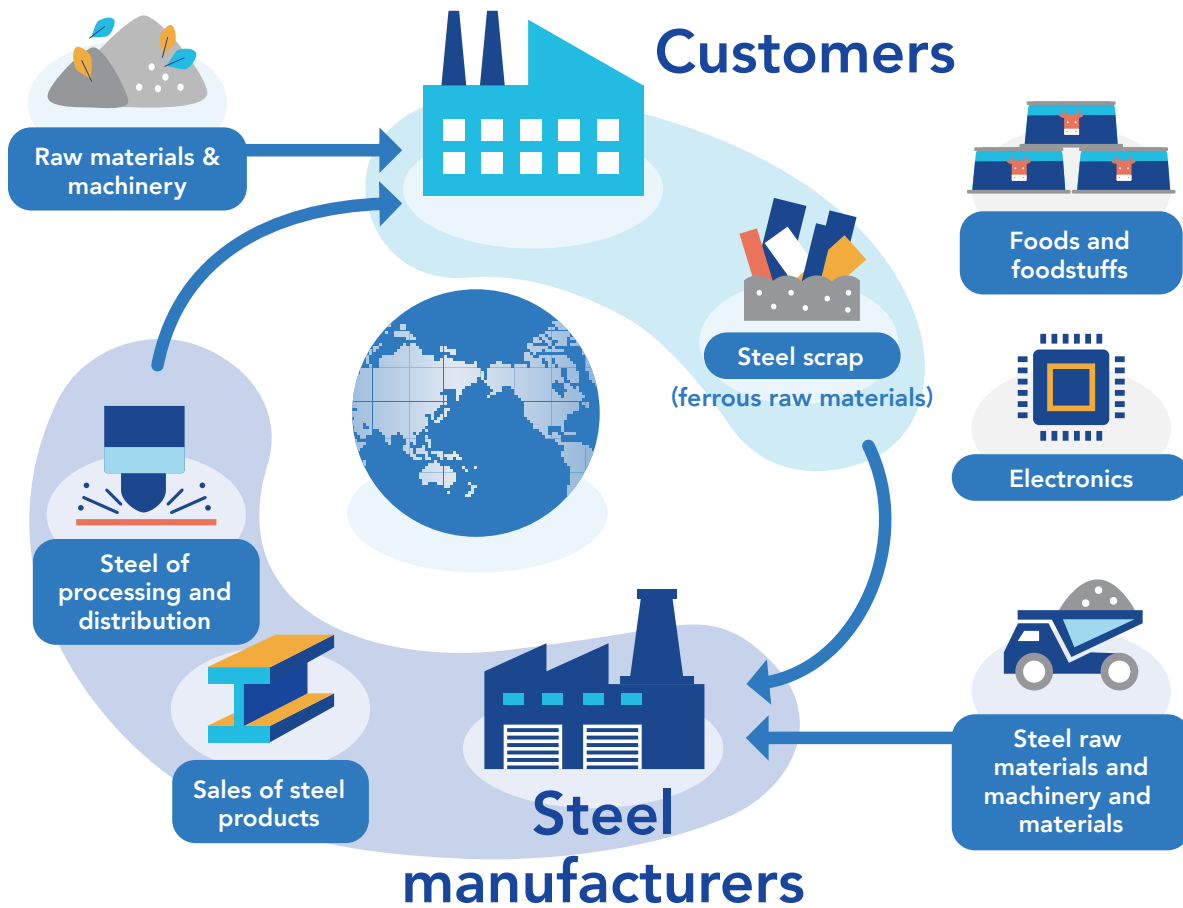
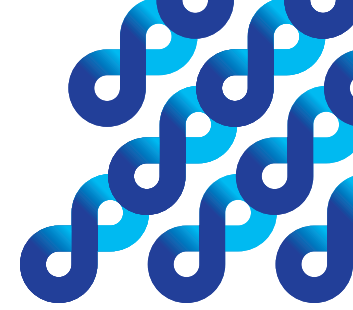


JFE Shoji



For more information

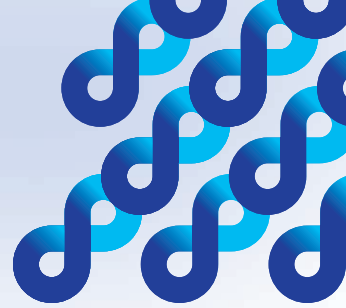
Business Introduction



Pursuing overall optimization for our customers and striving for sustainable growth and social contribution.

JFE Shoji, as the core trading company of the JFE Group, always takes overall optimization into consideration as it shares strategies with group companies and works to strengthen its functions. We are striving to further enhance our proposal and communication capabilities, with the goal of becoming a prominent company that grows sustainably alongside our customers. Furthermore, we contribute through our corporate activities to the realization of a sustainable society by providing eco-friendly products and engaging in global resource recycling initiatives.

Business Details



Steel usage & trade

For more information

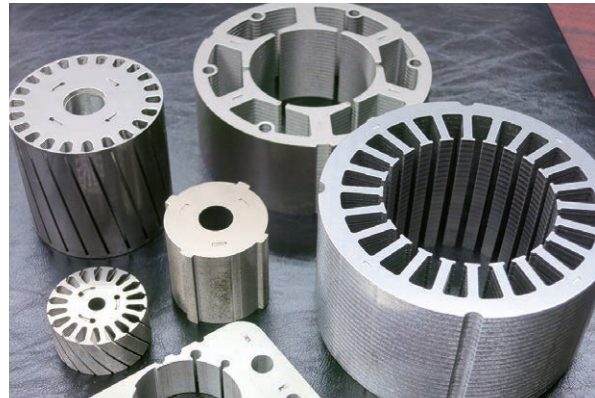


Automotive



We play a pivotal role in the automobile manufacturing supply chain, processing, distributing and selling automotive steel sheet to meet the various needs of automobile manufacturers in Japan and other countries. To address the worldwide tightening of environmental regulations in recent years, we are focusing on strengthening the supply chain for light and sturdy high-tensile steel sheet that reduces vehicle weight.

Appliances and Electrical Machinery

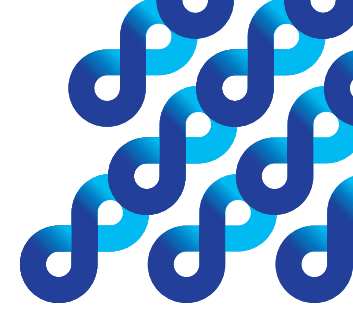


Leveraging our robust supply chain in Japan, the Americas, China, ASEAN, and Europe, we provide electrical steel sheet, surface-treated steel sheet, and other steel products to customers who manufacture products designed to support people's lives by handling the distribution of electricity. These products include generators, transformers, home appliances, office automation equipment, and electric vehicles.

Shipbuilding, Construction Machinery and Energy



We procure steel plate and sheet from JFE Steel and other steel manufacturers around the world, which are then used to build ships, construction and industrial machinery, offshore wind power generators, bridges, roofs, walls, etc. We meet customer needs with timely and proactive proposals and communication.



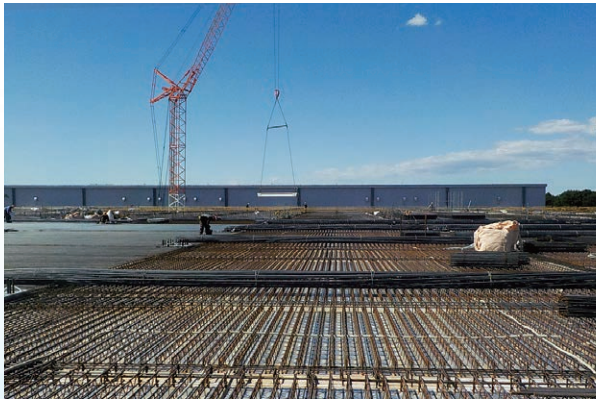
Business Details

Steel usage & trade

For more information



Construction Materials

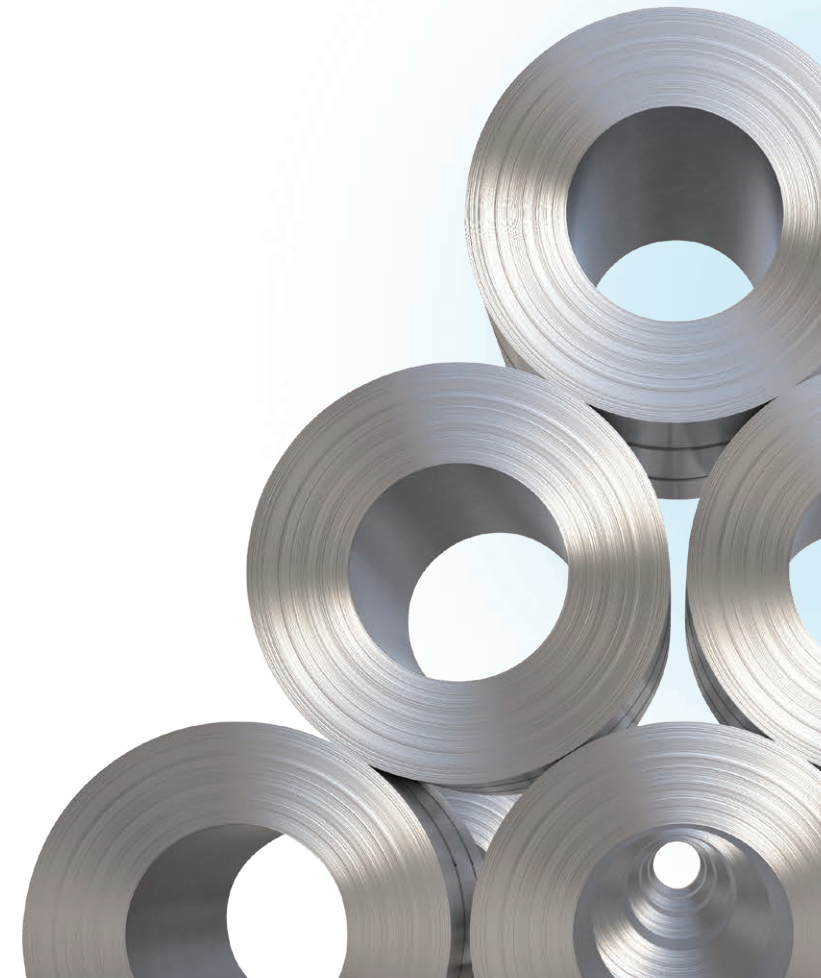


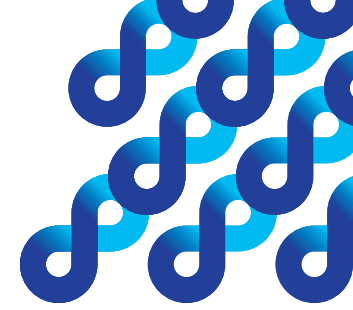
In Japan, we promptly and precisely respond to customer requests by leveraging diverse supply sources, including JFE Shoji Steel Construction Materials Corporation and other JFE Group suppliers. Overseas, we are intensifying our efforts to capture construction material demand in ASEAN and North America, where growth is expected.

Pipes & Fittings



Leveraging various sources in Japan and overseas, including JFE Steel, we have built a robust supply chain for our businesses that includes processing and warehousing through investments to swiftly meet demand. JFE Shoji Pipe & Fitting Corporation, which serves the domestic steel pipe sector, has thirteen locations nationwide and a sophisticated structure with strong regional roots.





Business Details

Steel making

For more information



Iron Ore, Coal & Coke



Our primary focus is on maintaining a stable supply of the iron ore and coal essential to the ironmaking business to JFE Steel. We are also expanding our imports, exports, and cross-border business involving raw materials such as blast furnace slag*. Furthermore, as part of our measures to reduce CO₂ emissions, we are expanding our offerings to include recycled plastic products and biomass-derived raw materials and products.

*A blast furnace byproduct primarily used to make cement.

Metallic Materials

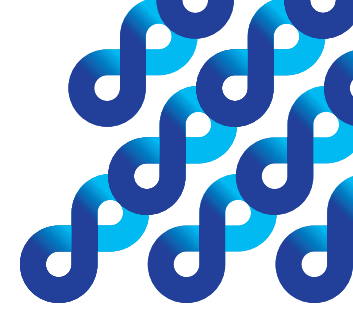


We procure ferrous alloys, nonferrous metals and special metals—auxiliary raw materials that determine the properties of steel—from suppliers around the world and sell them to JFE Steel and domestic and overseas steelmakers. Leveraging our global network, we diversify sources and the countries of purchase to ensure a stable supply of competitive raw materials.

Metal Recycling



Many countries have declared their intention to become carbon neutral by 2050. As a company, we are contributing to the advent of a low-carbon society by trading steel scrap in Japan and overseas. We leverage our purchasing and sales networks and storage yards in Japan and overseas and provide steel scrap via various kinds of trade.



| Business Details

| Steel making

For more information



Chemicals



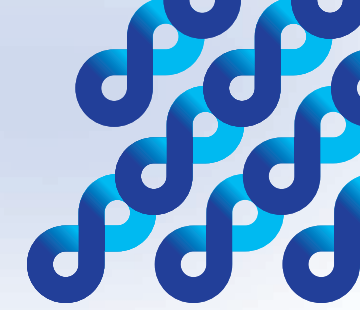
The raw materials we carry are used in various applications and products. Examples include tires, agricultural fertilizers, electrodes for secondary lithium-ion batteries, and electronic components used in 5G base station antennas. We leverage our domestic and overseas networks to sell a wide variety of raw materials produced via coal chemistry to various industries.

Blast Furnace Slag



Amid global efforts to reduce CO₂ emissions, our company contributes to the prevention of global warming by actively exporting blast furnace slag to cement manufacturers worldwide.





Business Details

Steel making

For more information



Machinery & Materials



We provide materials, machinery, and repair services for production in various industries, with a primary focus on the steel industry in Japan and around the world. We are currently working to grow beyond the domestic steel industry to expand our global network in order to become a trusted partner in a wide range of fields, including steel companies and engineering firms worldwide, as well as power companies in Japan.

Biomass Fuel



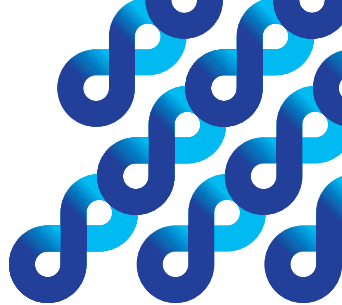
We import fuel materials from Southeast Asia that contribute to CO₂ emission reductions, such as palm kernel shells (PKS) and wood pellets made from culled wood and wood waste, and sell them to various biomass power generation business operators in Japan. We are also looking into importing torrefied pellets—which are gaining attention as a coal substitute—to expand our product lineup.

Ships & Fuel



In the field of shipping, we handle new construction, chartering*, sale and purchase of secondhand ships and ship recycling, and have a ship-owning business as well. In the fuel field, we primarily engage in transactions involving fuel and lubricants for ships. We will be developing a next-generation business in anticipation of the decarbonization of society.

*A business involving brokering ships hired according to the needs of shipping companies.



Business Details

Basic for daily life and industry



For more information

Foods



Under the theme “delicious food leads to happiness,” we work to provide safe, reliable and delicious food that enriches the diets of people all over the world. In particular, our Geisha brand canned foods have a history of over a century and are collectively recognized as a national staple in the Middle East and West Africa. We are also known for Nozaki’s Corned Beef, which is sold throughout Japan.

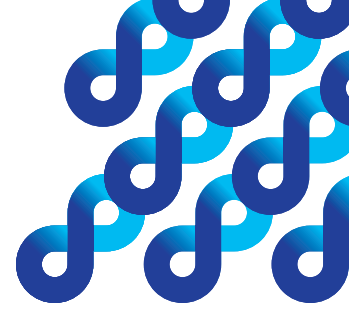
Electronics



In addition to developing and selling many high-value-added products worldwide—from semiconductor devices to large-scale equipment such as electronic component mounting setups— we provide total solutions based on our strengths such as advanced system proposal capabilities and technical support capabilities that quickly address customer needs.



Eco Solutions



JFE Shoji supports sustainable living and a sustainable society.

We are working on various environmental initiatives through our businesses.

For more information



1 Offshore Wind-Power Generation Business



As the spread of wind-power generation progresses worldwide, offshore wind-power generation — which involves the installation of wind turbines at sea — has grown rapidly in recent years. JFE Shoji launched its Renewable Energy Steel Products Team in July 2020, and the team has been steadily implementing a strategy to maximize steel sales and earn business income, including promoting collaborations with Taiwanese companies. We are building an integrated supply chain for steel sales and processing to promote collaborations within the JFE Group and to help spread the use of renewable energy.



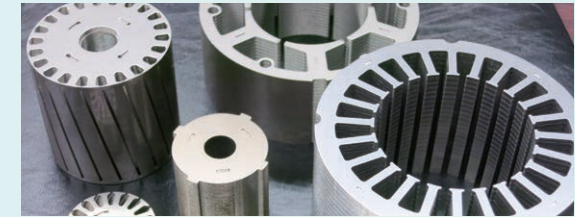
2 Biomass Fuel Business



As the world moves toward decarbonization, there is increasing demand for biomass fuels such as palm kernel shells (PKS) and wood pellets, which are not affected by the weather. JFE Shoji was among the first to launch a development project targeting the biomass fuels business, and the volume has been increasing year after year. The introduction of the Ministry of Economy, Trade and Industry's feed-in tariffs scheme in 2012 has accelerated this. We import these biomass fuels from various sources to ensure a stable supply and launched the Biomass Department in April 2020 as part of our efforts to rapidly develop the business.

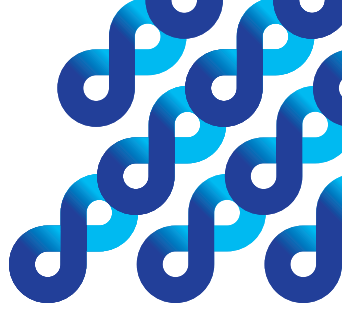


3 Electrical Steel Business



In addition to providing a stable supply of the high-quality electrical steel sheet that is essential for high-efficiency, low-loss motors and transformers, we are building a value chain that includes the necessary processing involved. This is part of our array of initiatives to address climate change, including those to reduce CO₂ emissions. We help preserve the global environment by carefully responding to customer needs based on a supply network that matches the global development of motor and transformer manufacturers.





Eco Solutions

JFE Shoji supports sustainable living and a sustainable society. We are working on various environmental initiatives through our businesses.



4 High-Tensile Steel Business



As automakers work to reduce CO₂ emissions with the aim of becoming carbon neutral, the high-tensile steel sheet the JFE Group develops and sells as automotive steel is being increasingly adopted as a key material that reduces vehicle weight. This is because it improves the strength of vehicles despite reduced sheet thickness. In 2021, our new automotive steel sheet processing and sales base began operations in Mexico, creating a system to meet customer needs in our four pillar regions—Japan, China, ASEAN and North America.



5 Scrap Business



Steel scrap has attracted greater attention in recent years as the world looks to reduce CO₂ emissions. The amount of steel scrap generated globally is growing, and the JFE Group sees this as a key opportunity. In addition to promoting steel manufacturing using the Group's electric furnaces, we are leveraging engineering technology to put the latest energy-saving electric furnace equipment into operation, seizing business opportunities in the process. We are also developing technology that will allow us to use more scrap in blast furnaces, expanding scrap usage throughout the steel industry.



6 Participation in External Initiatives



We do business globally, so our domestic and overseas offices and supply chains are deeply involved in the social issues affecting each region. To help realize a sustainable society, we have joined the UN Global Compact, the world's biggest sustainability initiative, and are ramping up our efforts in support of it.

Network

Business Fields Across the Globe

Sales Offices

in Japan **20**

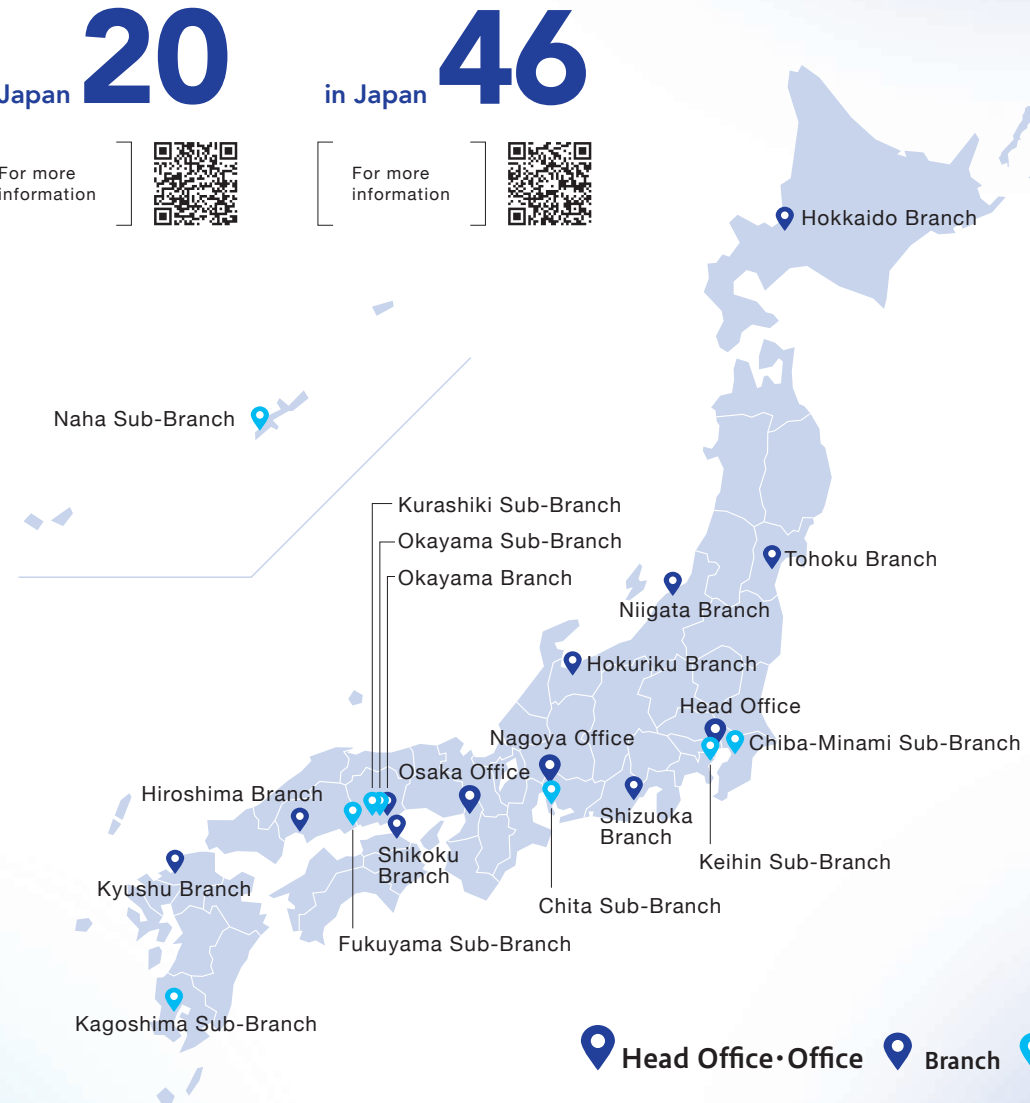
For more information



Group Companies

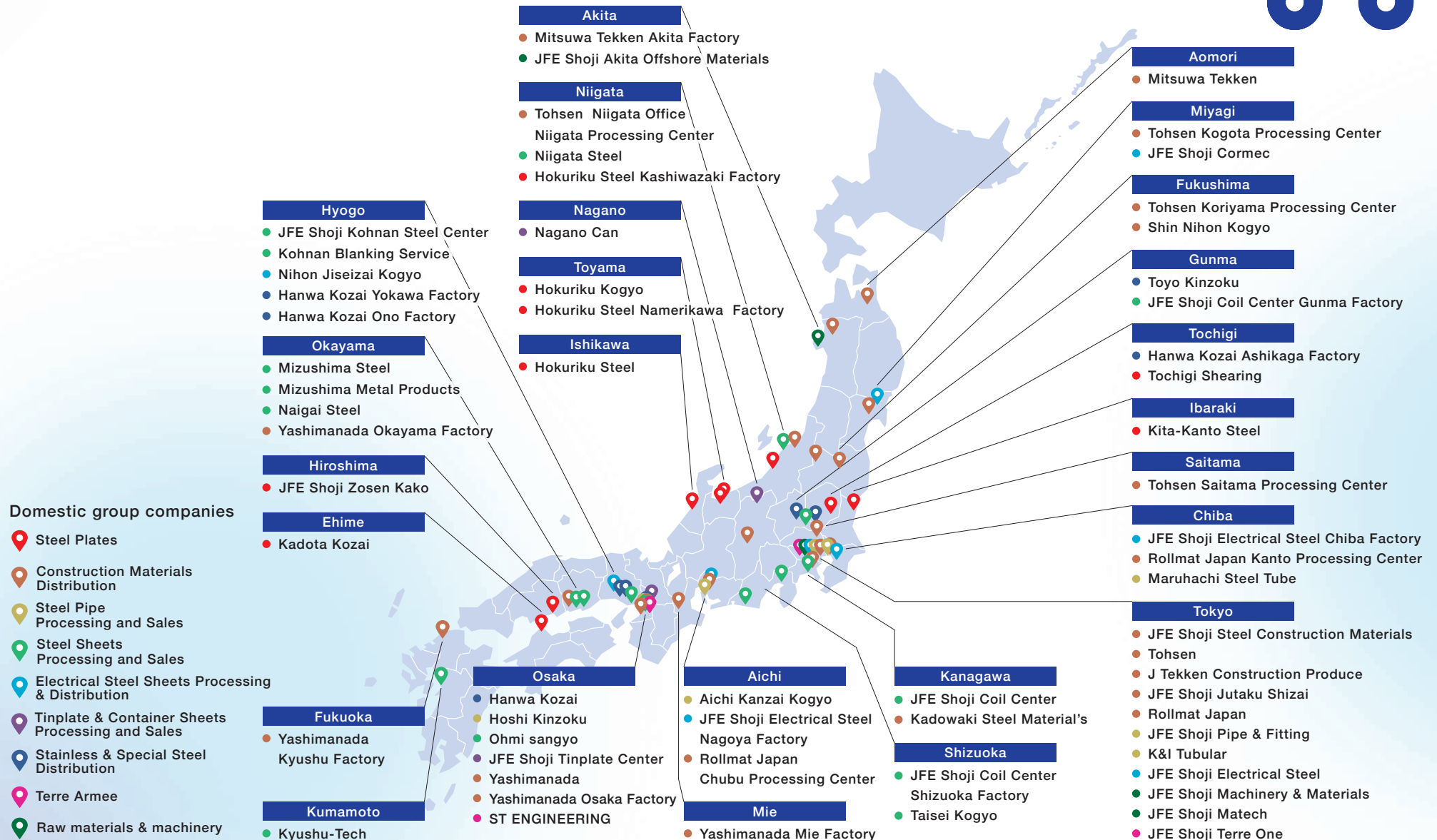
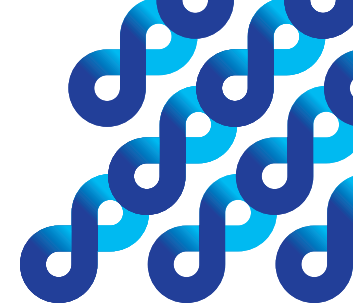
in Japan **46**

For more information

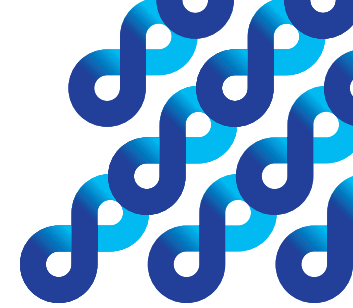


*As of April 01st ,2026

Network Group Companies in Japan



*As of April 01st ,2026



Network

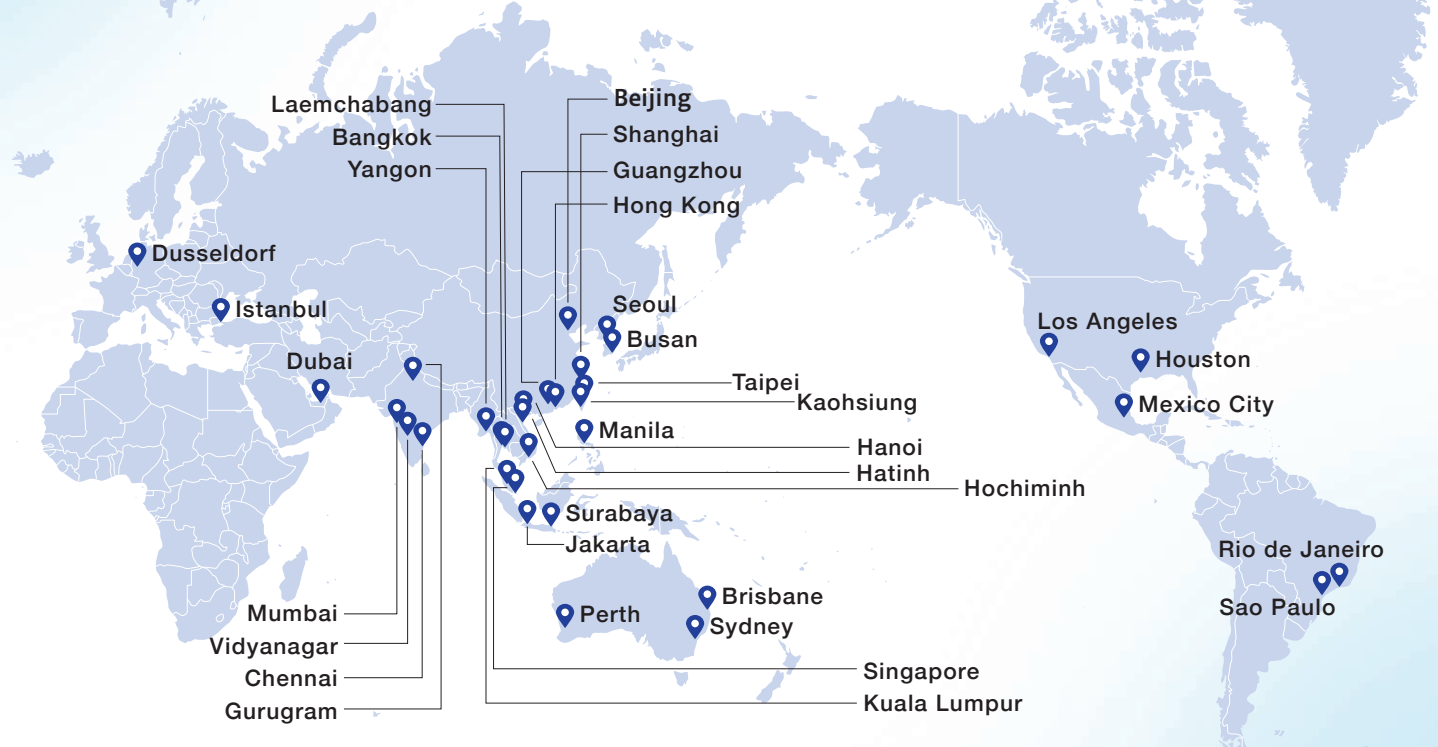
Sales Offices

Overseas **34**

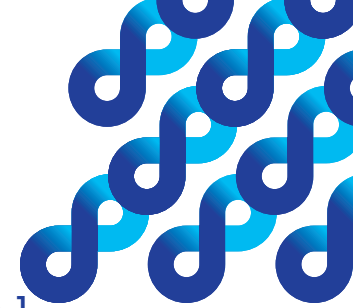


Group Companies

Overseas **58**



*As of April 01st ,2026



Network Group Companies Overseas

Steel Business [China · ASEAN · India]



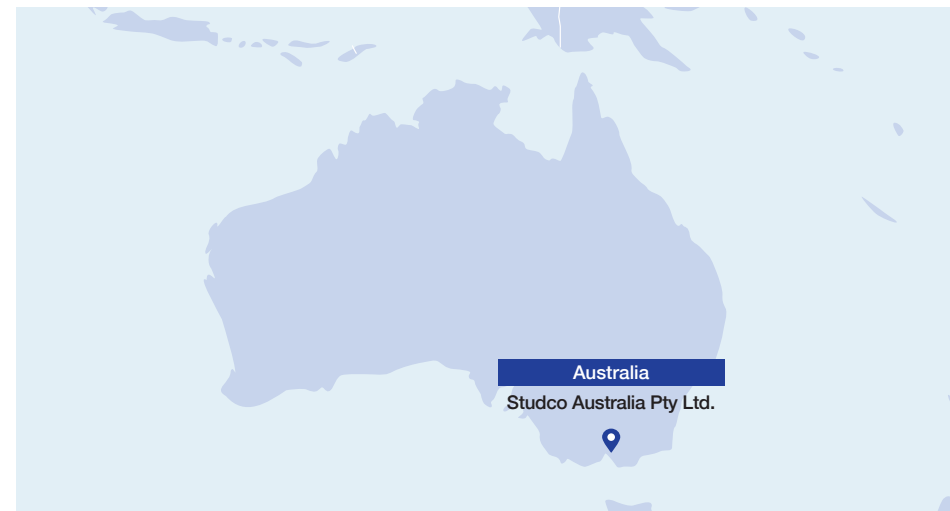
Steel Business [NORTH AMERICA]



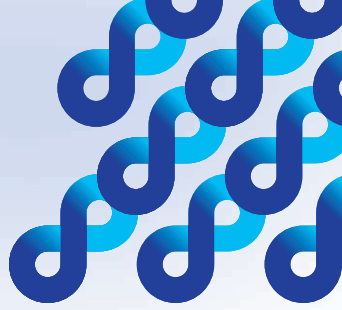
Steel Business [EUROPE]



Steel Business [AUSTRALIA]



*As of April 01st ,2026

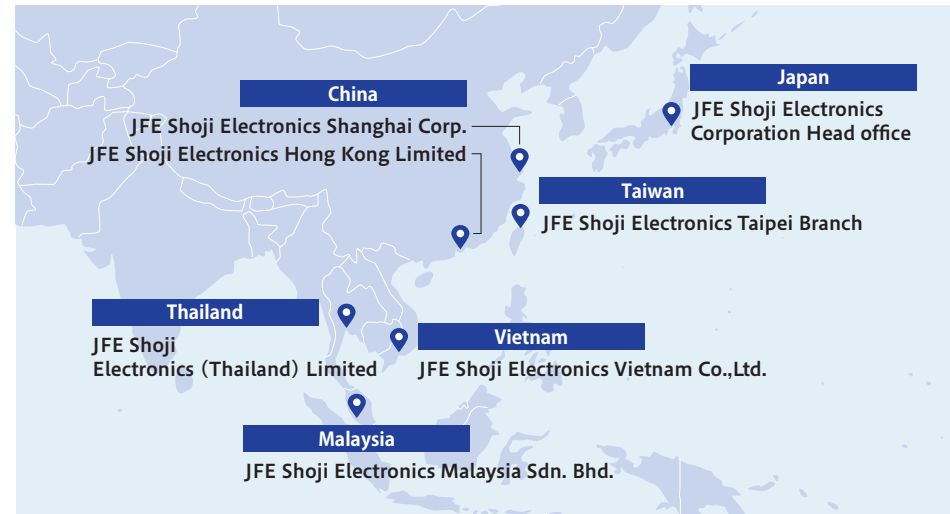


Network Group Companies Overseas

Food

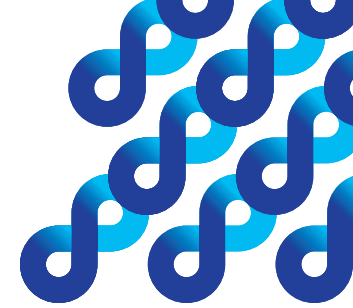


Electronics



*As of April 01st ,2026

Sustainability



JFE Shoji Group is striving to become a company with a strong market presence that achieves sustainable growth alongside our customers and stakeholders, including the JFE Group. We believe that ensuring sustainability in the supply chain is a pivotal issue in ensuring that outcome. As such, we have established our “Basic Policy on Sustainability in the Supply Chain” as our guiding principle for tackling human rights, labor issues, the global environment, and more in the supply chain. JFE Shoji Group seeks the understanding, cooperation and compliance of suppliers and other business partners with this basic policy as we build a more sustainable supply chain with them.



1. Respect for human rights

- Recognize the diverse values of individuals, and support and respect the protection of internationally proclaimed human rights.
- Prohibit inhumane treatment such as harassment and abuse including physical punishment.

2. Prohibition of discrimination

- Respect individuals in business activities and avoid all forms of discrimination.

3. Prohibition of forced labor and child labor

- Eradicate all forms of forced labor and child labor.

4. Improvement of working environment

- Promote the establishment of safer, healthier and more rewarding working environments for all employees.

5. Respect for basic rights in labor

- Respect the freedom of association and the right to engage in collective bargaining in line with the laws in each country and labor agreements.
- Comply with the minimum wage required by law and restrictions on overtime work.

6. Ensuring fair trade and anticorruption

- Comply with the laws and social norms in the countries and territories in which business activities are conducted, and thoroughly ensure fair trade and anticorruption.

7. Respect for global environment

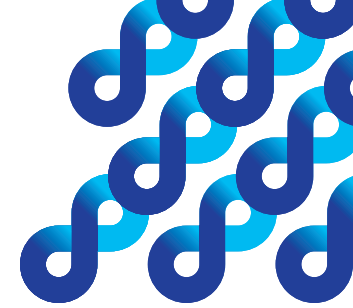
- Give due consideration to the resource preservation and environmental conservation, and continuously promote environmentally friendly business activities.

8. Information disclosure

- Provide timely and appropriate disclosures of information related to the above.

November 2020 JFE Shoji Corporation

Diversity and Well-being



We are actively pursuing various social contribution initiatives to help create a more prosperous society. Our overall goal is to become a corporate group whose inherent worth is clear to society and the market.

For more information



JFE Shoji's Initiatives

Improving Our Products and Services

To respond to an increasingly diverse market and sophisticated customer requirements in a timely fashion, we are enhancing our integrated supply chain from material procurement to processing and distribution.

· Stable product supply, unwavering quality assurance

· Initiatives to improve customer satisfaction

Creating Workplaces in Which Employees Can Work with Vigor

We are working to maintain and improve the health of our employees and their families and create workplace environments in which employees can work safely and with peace of mind and vigor.

· Health and safety initiatives

· Discover illnesses early, and maintain and promote the health of employees and their families

· Initiatives to support diverse workstyles

· J-SLIM operational reform activities

· Revitalizing worksites through small group activities (J1 activities)

Initiatives That Make the Most of Diverse Human Resources

We promote initiatives designed to foster a corporate culture in which diverse human resources play active roles based on various workstyles.

· Promoting diversity

· Re-employment system

· Training and measures to draw out the full potential of human resources

· Global human resources development

Under the governance system of JFE Holdings, we have developed a unique system suitable for each industry and ensured the best course of action for competitiveness and profitability.

For more information



Initiatives to Raise Compliance Awareness

Comprehensive Corporate Ethics and Legal Compliance

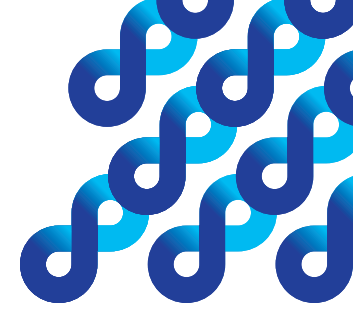
1. Steadily implement training and other programs to thoroughly instill awareness of compliance

We believe it is essential to deepen knowledge and awareness of compliance among all members in the organization and to put this into daily practice. As such, we create e-learning materials and our Compliance Guidebook and hold discussion sessions to educate employees on the Antimonopoly Act, the Subcontract Act, the prevention of corruption (such as bribing officials) and more.

2. Thoroughly institute measures that raise awareness about whistleblowing and consultation hotlines, and strengthen initiatives that address power harassment

We have established compliance and harassment hotlines and are working on comprehensive information management, developing related user manuals, and more.

Sustainability Activities



International Initiatives & Education

Donations to West Africa



Since 2011, as part of our support for education and food, we have been making annual donations of Kawasho Foods GEISHA brand products (canned mackerel and pickled tomatoes) as well as desks, chairs, and notebooks bearing the JFE logo to schools in Nigeria and Ghana.

Contributions to the Local Community

Supporting the Kasumigaura Marathon



We participate as corporate volunteers in the Kasumigaura Marathon & International Blind Marathon, an event organized by Tsuchiura City, Ibaraki Prefecture, which attracts over 10,000 runners every year.

Social Welfare

Sales Training Support for Special Needs Schools



We have partnered with Tokyo Metropolitan Adachi Special Needs School to hold bread sales training sessions in our company cafeteria about five times a year, providing students with valuable work experience opportunities.

Environmental Initiatives

Environmental Activity Events



We hold two annual events, in collaboration with NPOs, aimed at environmental beautification and recycling, which are open to participation by employees and their families.



JFE Shoji Corporation

| Head Office Otemachi Financial City North Tower, 1-9-5, Otemachi, Chiyoda-ku, Tokyo, 100-0004

| TEL 81-3-5203-5053

| FAX 81-3-5203-5289

| URL <https://www.jfe-shoji.co.jp/en/>



| JFE shoji
official X
@JFE_shoji

