

February 29th, 2016

JFE Shoji Trade Corporation
Corporate Planning Dept
Public Relations Sec

Change of Organizations

JFE Shoji Trade Corporation has decided the following changes of organizations which will be effected as of April 1st, 2016.

1. American Business Division to be newly established.

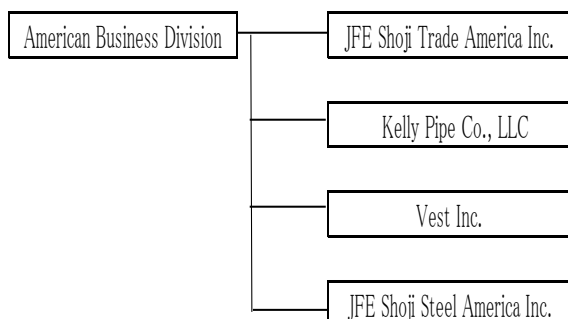
1) Background of this establishment.

- Since the assignment of Executive Officer, who takes charge of American Markets and stays in U.S.A, as of April, 2013, our business areas have been expanded and deepened into not only North America but also Mexico.
- In accordance with this movement, management functions of our each group company in U.S.A & Mexico to be strengthened further more.
- Simultaneously, decision making for business in American markets to be done more swiftly by this establishment.

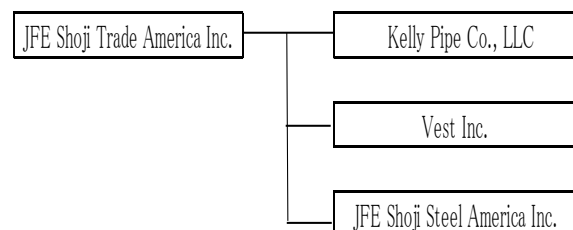
2) Organization

- JFE Shoji Trade America Inc., Kelly Pipe Co.,LLC, Vest Inc., JFE Shoji America Inc. to be placed under American Business Division.

【As of April 1st, 2016】



【Until March 31st, 2016】



2. Change of the organization within Stainless & Special Steel Division

1) Background of this change.

- As our Japanese customers for stainless & special steels are accelerating their business activities into overseas markets, our sales organizations for these items to be changed to ones which can manage not only domestic but overseas markets.
- Through deepening the cooperation with JFE Steel in Western Japanese region by placing the department in Osaka, our functions for fulfilling customers' needs in these regions to be enhanced.

2) Organization

- Stainless & Special Steel Dept, Osaka Stainless & Special Steel Dept and Steel Bar, Wire Rod & Iron Powder Dept to be placed under Stainless & Special Steel Division.

【As of April 1st, 2016】



【Until March 31st, 2016】



- * Stainless & Special Steel Dept No.1 is mainly in charge of domestic markets and Stainless & Special Steel Dept No.2 is mainly in charge of overseas market respectively in current stage.

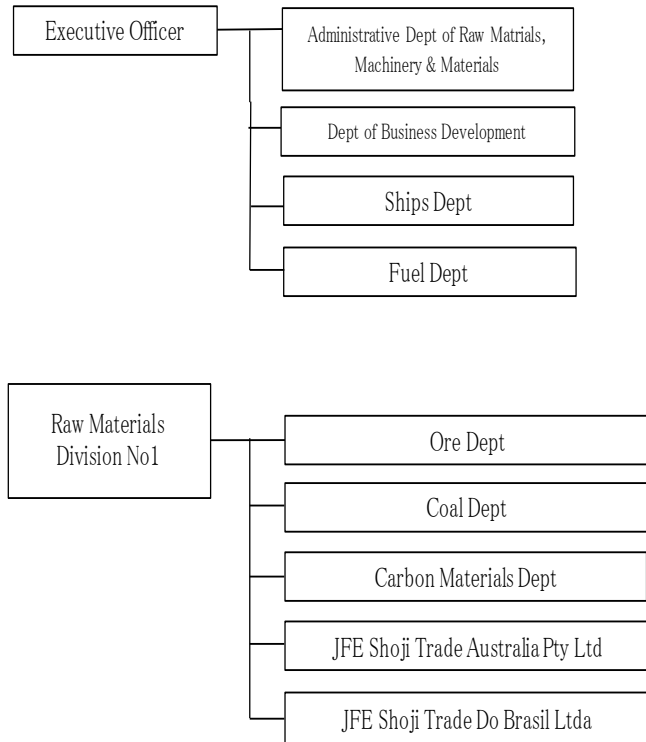
3. Change of the organization within Raw Materials Division No.1, and new assignments of Ships Dept & Fuel Dept.

1) Background of this change and assignments.

- By getting Ships Dept and Fuel Dept, which are coping with rapidly changing ships business circle, to be placed under the Executive Officer directly, decision makings for both Depts to be accelerated.
- Through this change of organization, more effective operations and enhanced service functions of Raw Materials Division No.1 to be expected. And the Division to be put their energies into constructing stable & enlarged supply chains for not only JFE Group's companies but other customers further more.

2) Organization

【As of April 1st, 2016】



【Until March 31st, 2016】

